

APPLICATIONS

- Aircraft and Military
- Disinfection Environments
- Electrical Control Panels
- Industrial machinery
- Instrument Panels
- Outdoor Signage
- Safety Applications
- Transportation Dashboards
- Vending and Gaming Machines

FEATURES

- Designed for harsh and outdoor environments
- Wide viewing angle
- Anti-vandal low profile light pipe
- Optical core ends polished to 10 microns for optimal light transmittance
- Resistant to shock and vibration
- ESD protection
- Available in black and clear anodized finishes
- Five different lens colors are available: red, green, clear, blue, and amber
- For best results use narrow viewing angle nondiffused LEDs with output greater than 100 mcd
- For custom light pipe length contact Langir
- RoHS and REACH Compliant



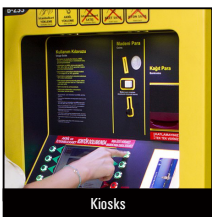
Yacht Controls



Security Devices



Industrial Controls



Kiosks



Electrical Housewares



Medical Equipment



PART NUMBER CONFIGURATOR

Series

LXR

Indicator Diameter

08	8mm dia.
10	10mm dia.
12	12mm dia.

*Custom available upon request

Colours Material

A0	Natural Anodized
A1	Blue Anodized
A2	Black Anodized
A3	Green Anodized
A5	Gold Anodized
A6	Red Anodized
B	Stainless Steel

Lens

F	Flat
D	Dome

Lens-Color Options

R	Red Transparent
G	Green Transparent
C	Clear Transparent
B	Blue Transparent
A	Amber Transparent

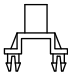
Light Pipe Length Options

04	4in (101.6mm)
06	6in (152.4mm)
08	8in (203.2mm)
12	12in (304.8mm)


*Custom lengths available upon request

LED ADAPTER OPTIONS


Mounting Options (Order Separately)



SMD 22

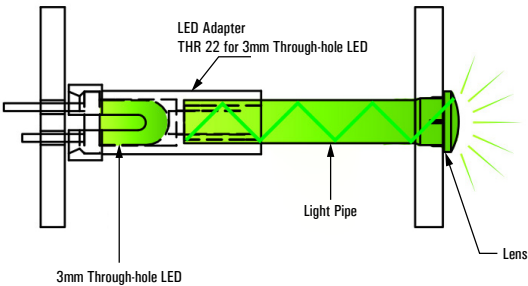


THR 22

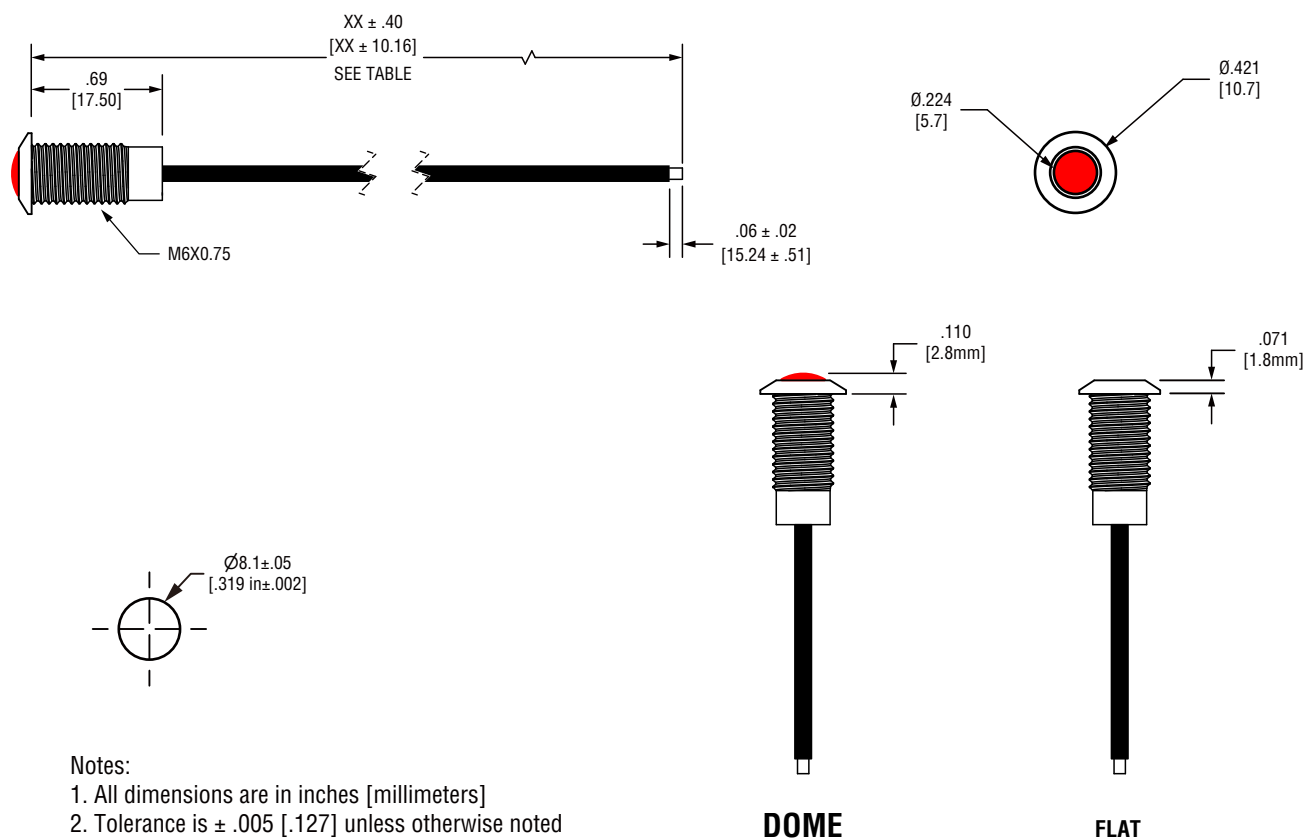


THR 5 22

SMD 22 for SMD LED
THR 22 for 3mm Through-hole LED
THR 5 22 for 5mm Through-hole LED



DIMENSIONS

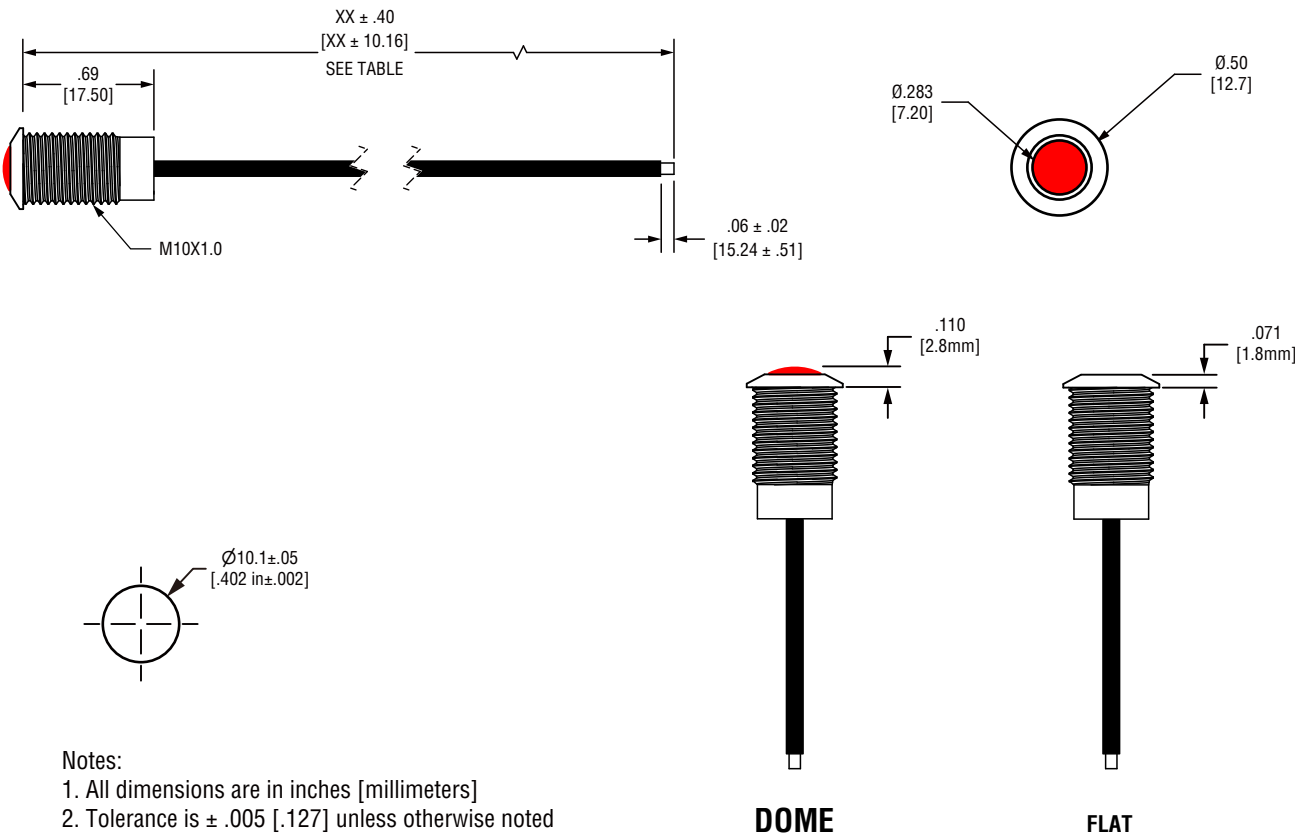


SPECIFICATIONS

Materials	
Body	Aluminum Alloy or Stainless Steel
Lens	Polycarbonate, UL rating 94-V2
Washer	Steel, Zinc Plated
Retaining Nut	Nickel plated-Brass
Fiber Optic	1.5mm optical core, 2.2mm polyethylene cable jacket
Moisture Seal	EPDM

Installation Specifications	
Mounting Hole	$\emptyset 8.1 \pm .05$ (.319 in $\pm .002$)
Panel Thickness	.059 (1.5mm) Min to .320 (8.1mm) Max

DIMENSIONS

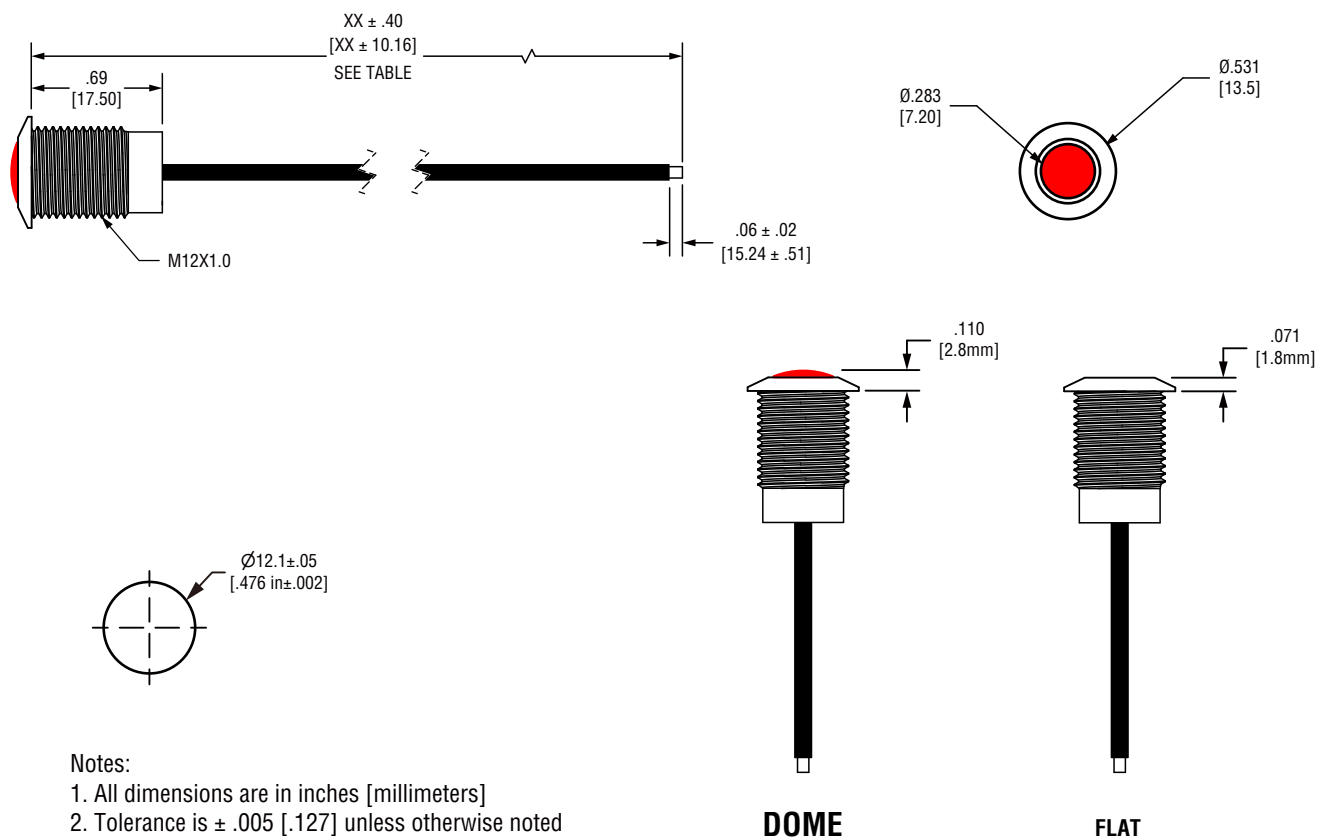


SPECIFICATIONS

Materials	
Body	Aluminum Alloy or Stainless Steel
Lens	Polycarbonate, UL rating 94-V2
Washer	Steel, Zinc Plated
Retaining Nut	Nickel plated-Brass
Fiber Optic	1.5mm optical core, 2.2mm polyethylene cable jacket
Moisture Seal	EPDM

Installation Specifications	
Mounting Hole	$\varnothing 10.1 \pm .05$ (.402 in \pm .002)
Panel Thickness	.059 (1.5mm) Min to .320 (8.1mm) Max

DIMENSIONS



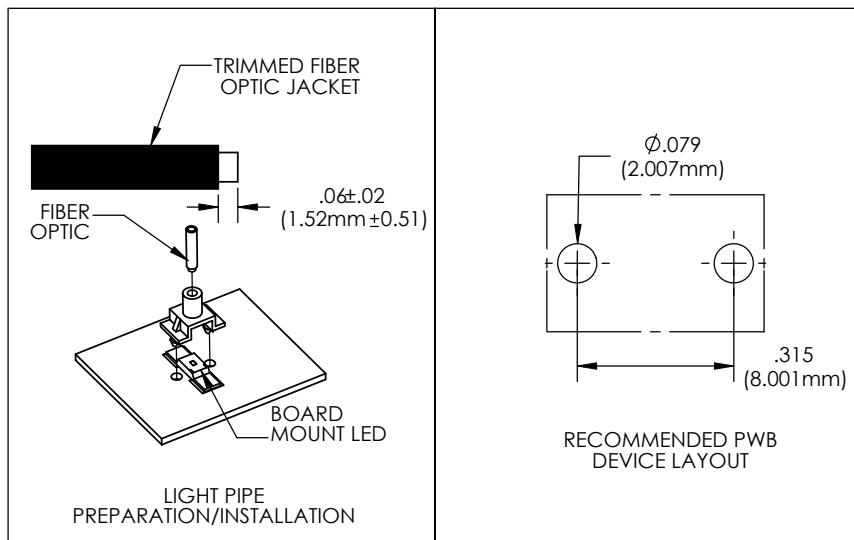
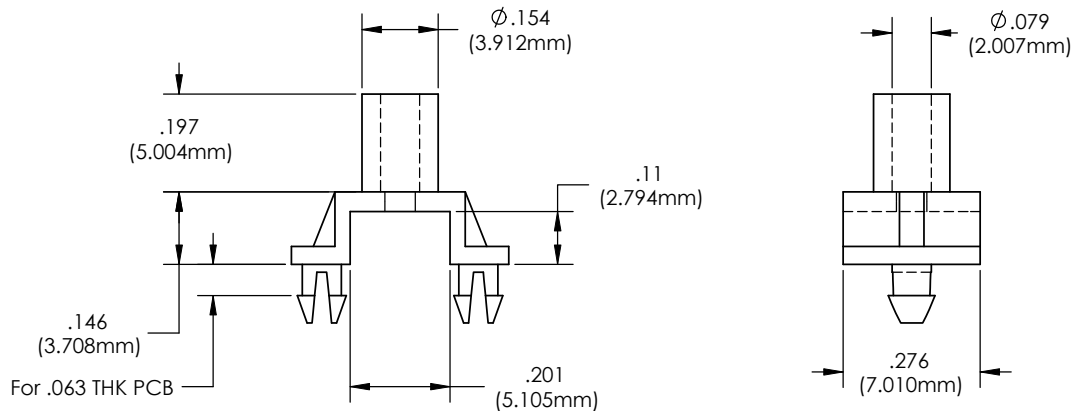
SPECIFICATIONS

Materials	
Body	Aluminum Alloy or Stainless Steel
Lens	Polycarbonate, UL rating 94-V2
Washer	Steel, Zinc Plated
Retaining Nut	Nickel plated-Brass
Fiber Optic	1.5mm optical core, 2.2mm polyethylene cable jacket
Moisture Seal	EPDM

Installation Specifications	
Mounting Hole	$\varnothing 12.1 \pm .05$ ($.476 \text{ in} \pm .002$)
Panel Thickness	.059 (1.5mm) Min to .320 (8.1mm) Max

LED ADAPTER SMD 22

MATERIAL : NYLON 6/6, BLACK UL 94-V2

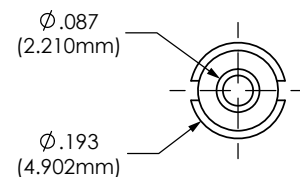
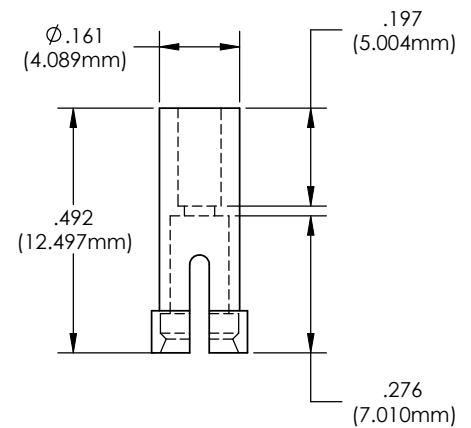
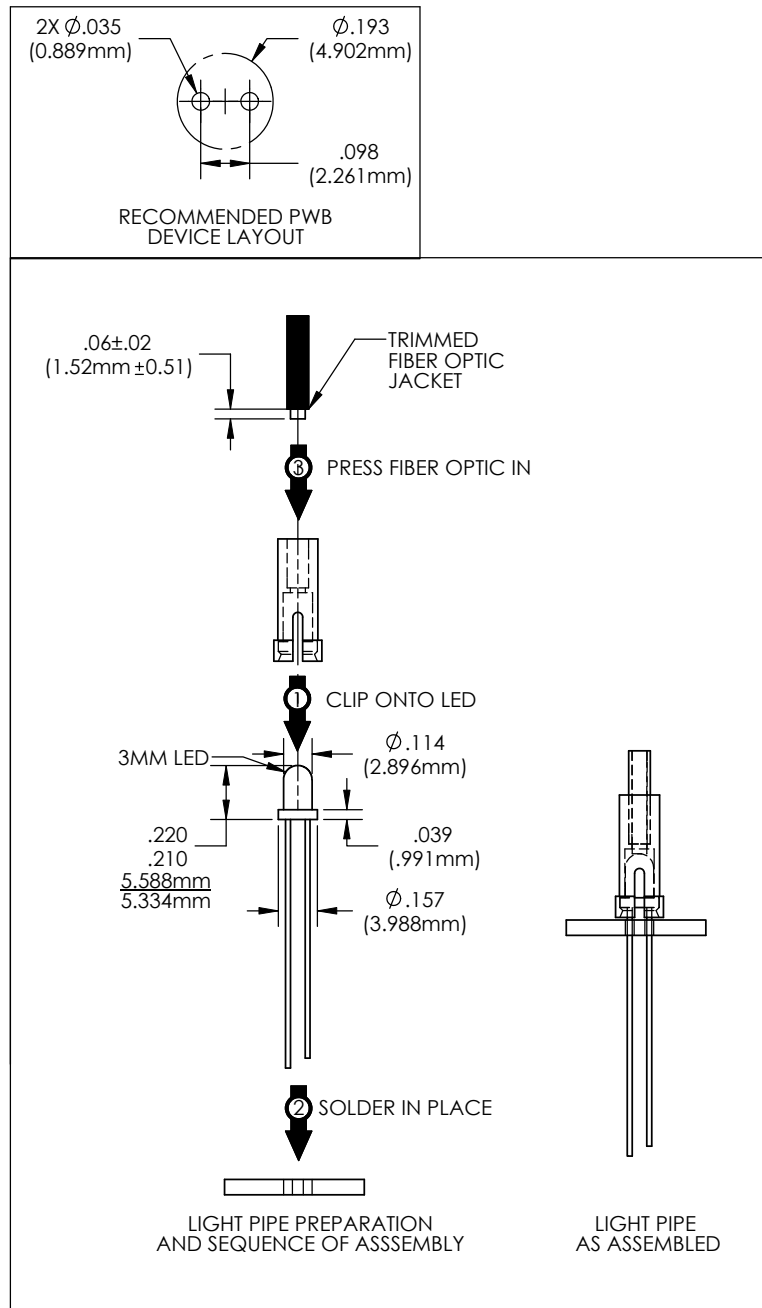


NOTES

1. ROHS COMPLIANT
2. -40°C TO 85°C OPERATING TEMPERATURE
3. SUITABLE FOR LIGHT PIPE WITH $\phi 2.2$ MM JACKET AND OPTICAL CORE NO GREATER THAN $\phi 1.5$ MM.
4. DO NOT INSTALL PRIOR TO SOLDERING
5. FOR BEST RESULTS USE ONLY NARROW VIEWING ANGLE NON-DIFFUSED LEDS WITH OUTPUT POWER GREATER THAN 100mcd

LED ADAPTER THR 22

MATERIAL: NYLON 6/6, BLACK UL 94-V2

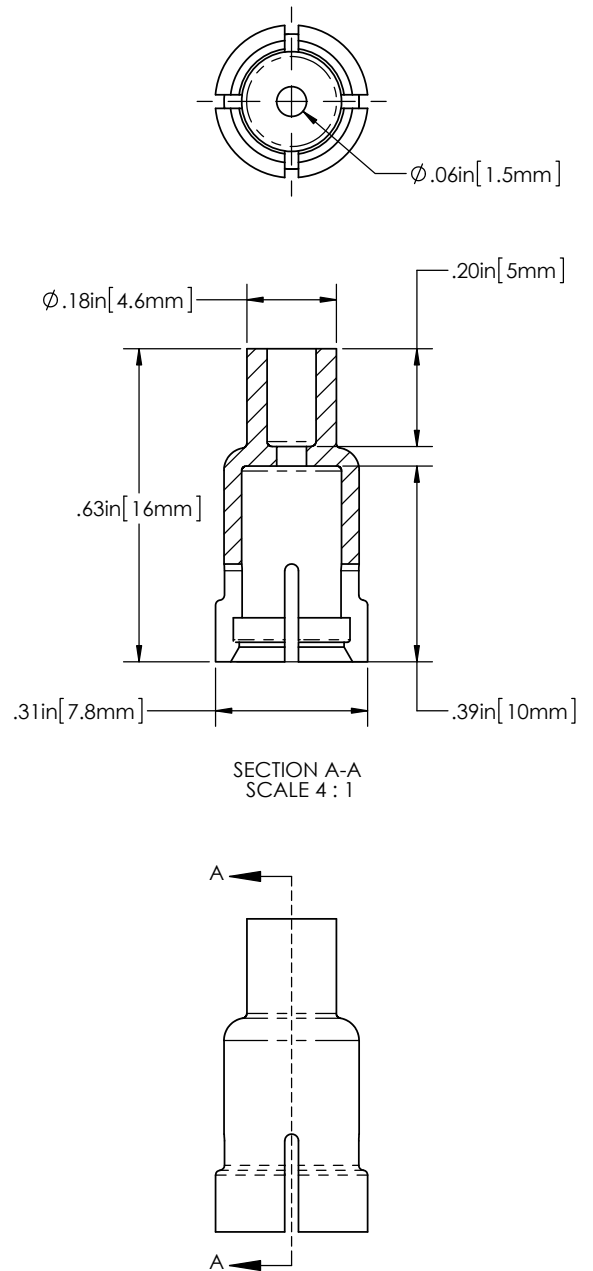
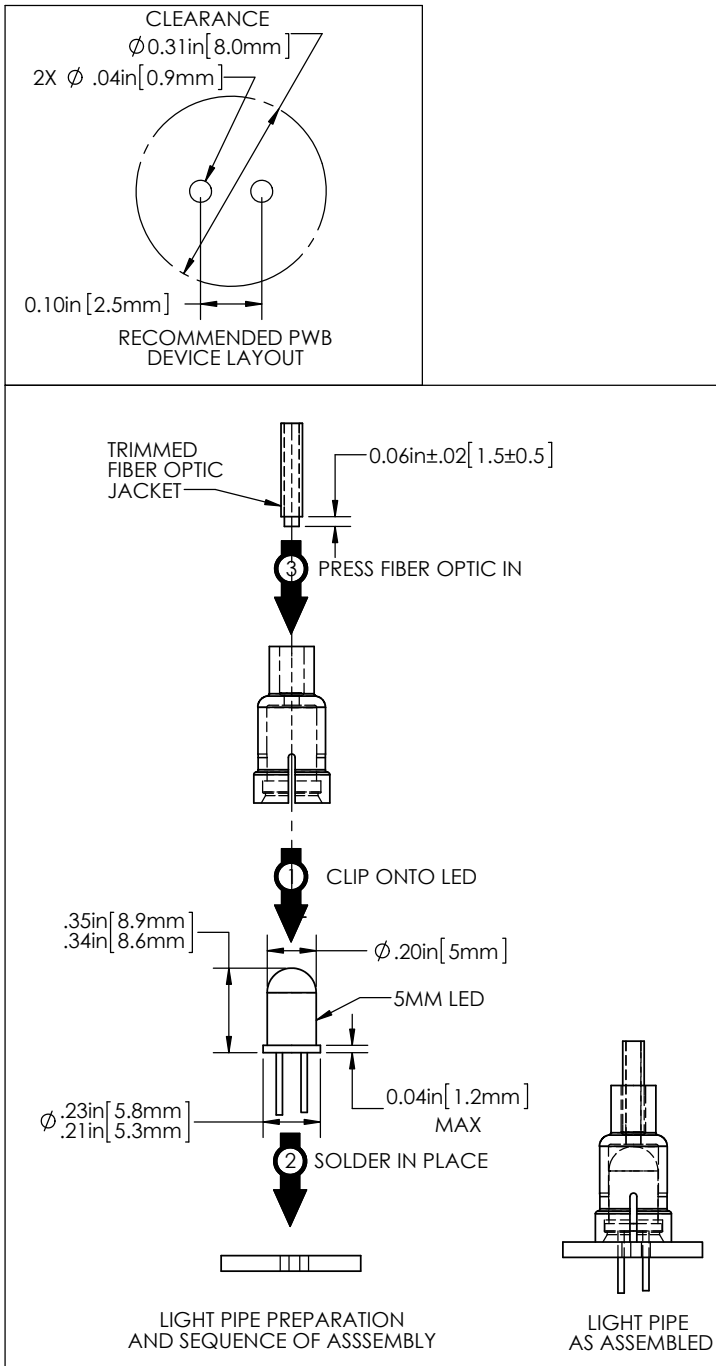


NOTES

1. ROHS COMPLIANT.
2. UL 94V-2 FLAMMABILITY RATING.
3. -40°C TO 85°C OPERATING TEMPERATURE.
4. SUITABLE FOR LIGHT PIPE WITH $\phi 2.2$ MM JACKET AND OPTICAL CORE NO GREATER THAN $\phi 1.5$ MM.
5. DO NOT WAVE SOLDER WITH THIS DEVICE.
6. FOR BEST RESULTS USE ONLY NARROW VIEWING ANGLE NON-DIFFUSED LEDS WITH OUTPUT POWER GREATER THAN 100mcd.

5mm Through Hole LED

LED ADAPTER THR 5 22



NOTES

1. ROHS COMPLIANT.
2. UL 94V-2 FLAMMABILITY RATING.
3. -40°C TO 85°C OPERATING TEMPERATURE.
4. SUITABLE FOR LIGHT PIPE WITH $\phi 2.2\text{MM}$ JACKET AND OPTICAL CORE NO GREATER THAN $\phi 1.5\text{MM}$.
5. DO NOT WAVE SOLDER WITH THIS DEVICE.
6. FOR BEST RESULTS USE ONLY NARROW VIEWING ANGLE NON-DIFFUSED LEDS WITH OUTPUT POWER GREATER THAN 100mcd .

MATERIAL: NYLON 6/6, BLACK UL 94-V2